

AUGUST 9, 1945.

BSA 1945 MODELS

4^D

MOTOR CYCLING

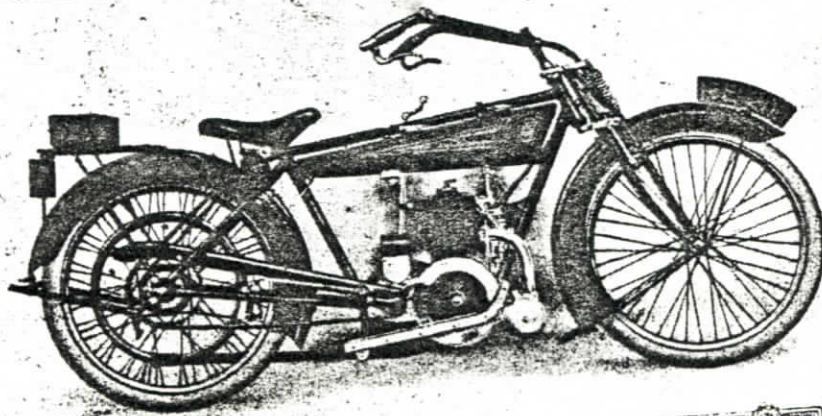
Registered at the G.P.O. as a Newspaper.

READ WHEREVER
MOTORCYCLES
ARE RIDDEN

Editor:
GRAHAM WALKER

motor-cycling

The 2½ h.p. Royal Enfield Two-stroke.. Model 200



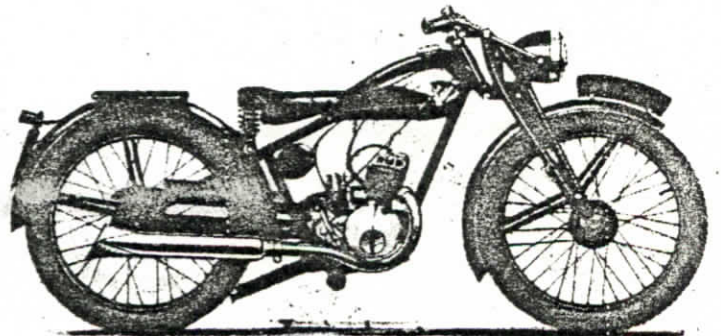
1915

Royal Enfield

"MADE LIKE A GUN"

Riders of modern Royal Enfield Two-stroke motor cycles have the benefit of 30 years of continuous manufacture of this class of machine, as it was as long ago as 1915 that the first Royal Enfield Two-stroke was placed on the market. It had an immediate success and since then at least one Two-stroke model has been included in every Royal Enfield motor cycle programme. The machine shown in the reproduction from our 1915 Catalogue was of 225 c.c., while its modern counterpart, also illustrated, is a 125 c.c. model.

Alterations and improvements have taken place but now, as always, Royal Enfield motor cycles are made of the finest obtainable materials by highly skilled workmen under ideal conditions.



THE ENFIELD CYCLE CO. LTD. Head Office & Works REDDITCH