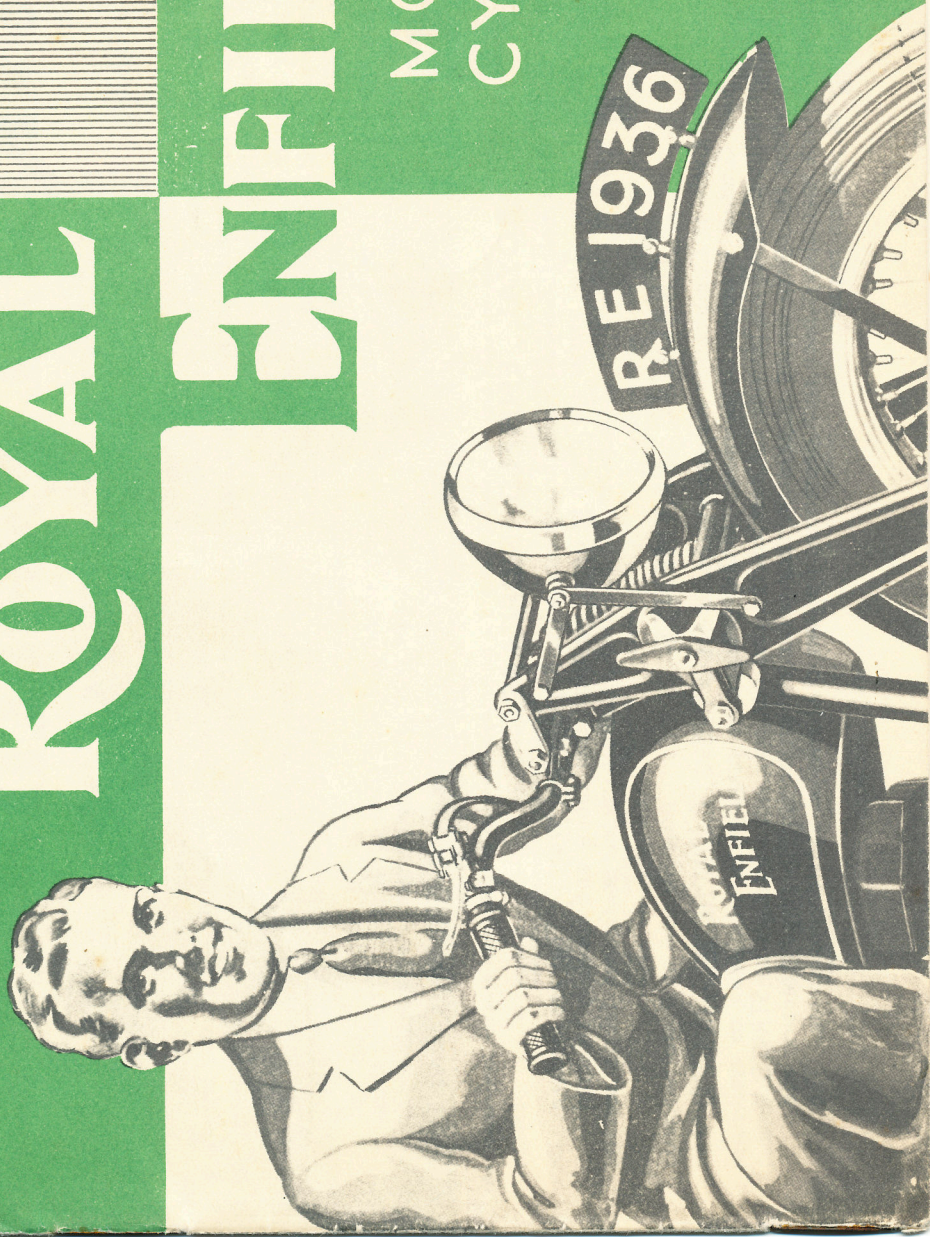


ROYAL

ENFIELD

MOTOR
CYCLES



ROYAL ENFIELD

MOTOR CYCLES

THE range of Royal Enfield motor cycles covers the requirements of all riders, and includes small two-strokes, large and small side-valve machines, the famous big twin and a range of overhead valve models. The latter are unique in combining high performance with silence and long life, ensured by the special system of totally enclosed and automatically lubricated valve gear.

For 1936 the most popular of the previous season's machines are retained, with only detail alterations. In addition three entirely new models are listed. These consist of a 350 c.c. and 500 c.c. O.H.V. with totally enclosed valve gear and also a 500 c.c. 4-valve machine with a very high performance.

These models are entirely new in design, but incorporate only sound and well tried principles. Drastic tests have shown their performance, reliability and road-holding qualities to be worthy of their handsome appearance.

All Royal Enfield motor cycles are made throughout in our large, modern factory at Redditch, the organised efficiency of which alone enables us to offer these high quality machines at such attractive prices.

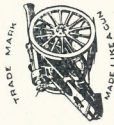
ROYAL ENFIELD SIDECARS

The Sidecars illustrated in this Catalogue are all made throughout in the Royal Enfield Works. They are modern in every way and cater for all tastes. The chassis are made of finest weldless steel tubing and specially selected timber is used for the frame work of the bodies. The latter are panelled in sheet metal or figured fabric on plywood.

GRADUAL PAYMENTS

Any Royal Enfield Motor Cycle or Combination may be purchased out of income, and for the convenience of customers we have our own Gradual Payment Department, so that prospective purchasers, who wish to avail themselves of the excellent facilities which we provide can rest assured that not only will all details be STRICTLY CONFIDENTIAL, but throughout the whole period of payment they will receive that same prompt attention and sympathetic consideration which have always been such prominent features of the Royal Enfield programme. The necessary forms will gladly be sent on request.

MODEL Z
"CYCAR"
148 c.c. Two-stroke

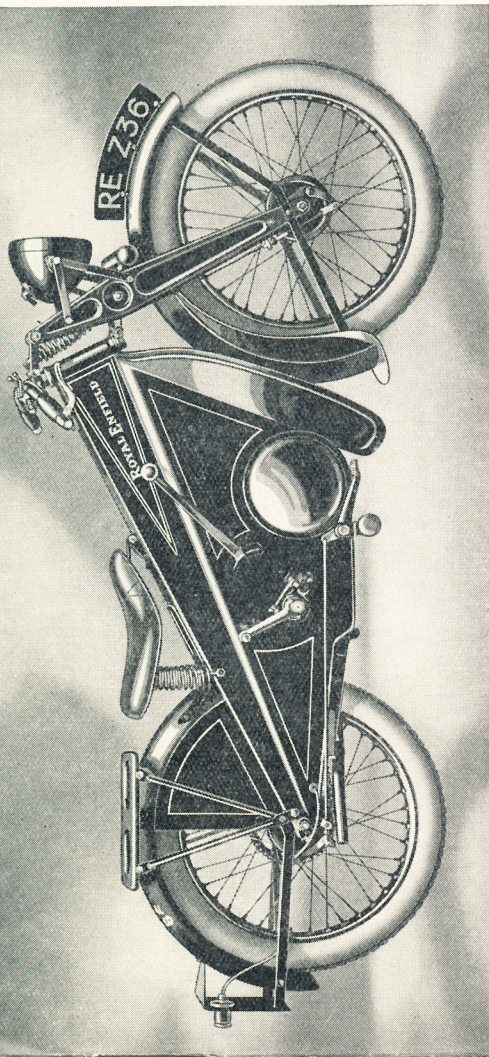


ROYAL
ENFIELD

CASH PRICE

19 Guineas

including Electric Lighting Set
 or by Gradual Payments



An economical, reliable lightweight of unique design, which will take you anywhere and keep you clean.

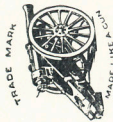
- | | |
|--|---|
| <p>FRAME . . . Made from a single steel pressing, enclosing the entire engine, gearbox, etc. Complete protection from oil, grease and mud without sacrifice of accessibility.</p> <p>ENGINE . . . 148 c.c. single cylinder two-stroke, bore and stroke 56 x 60 m/m. Roller bearing big end.</p> <p>LUBRICATION . . . Oil mixed with petrol.</p> <p>CARBURETTOR . . . Two-lever control. Fitted with air cleaner.</p> <p>IGNITION . . . Villiers flywheel magneto.</p> <p>LIGHTING SET . . . Direct lighting from flywheel dynamo. 4-pole cobalt steel magnets, giving large output. Head lamp, 7 1/2 in. dia., and rear light. Parking light from dry battery.</p> | <p>GEARBOX . . . Three-speed with hand control. Standard ratios: 7.2, 12.8, and 20 to 1. Hand-lever - controlled clutch and kick starter</p> <p>TRANSMISSION . . . Front chain totally enclosed in oilbath case</p> <p>TANK . . . Entirely separate from the frame. Oil measure attached to filler cap.</p> <p>TYRES . . . Dunlop cord, 25 x 2.75 in., wired on.</p> <p>STAND . . . Spring-up central stand</p> <p>MUDGUARDS . . . Wide-valanced front guard, and rear guard with large side valances. Rear guard and carrier quickly detachable.</p> <p>EQUIPMENT . . . Detachable pressed steel leg shields.</p> <p>FINISH . . . Black enamel, relieved with bronze lining.</p> |
|--|---|

ANNUAL TAX - 12/-

GENERAL SPECIFICATION OF ROYAL ENFIELD MOTOR CYCLES

- ENGINE** - - - Piston of special aluminium alloy, heat treated. Large floating gudgeon pin. Very rigid flywheel assembly, connecting rod and crankcase. Valves of the finest quality valve steel. Hardened valve guides. Valve springs of specially tempered steel. Roller bearings to big end in all models and to main bearings except on two-strokes. Two cam shafts with wide cams operating directly on to large diameter flat base tappets.
- SILENCER** - - - A new Enfield absorption silencer fitted on certain machines. This is based on principles arrived at by the Silencing Committee of the British Association. A high degree of silence is obtained with the minimum power loss.
- LUBRICATION** - Two-stroke Models by petrol system; Model K by sight-feed mechanical pump. Other Models are lubricated by the Royal Enfield dry-sump system. Oil is fed direct to the big end, and can be seen returning to the oil compartment on removal of the filler cap. Two large and accessible filters are provided.
- FRAME** - - - Of cradle type, combining strength and rigidity with moderate weight. Built throughout of the finest quality weldless steel tubing, with liners where necessary. Lugs for sidcar attachment on all but lightweight models. Adjustable handlebars and footrests.
- FRONT FORK** - Central compression spring type, giving perfect steering and road-holding qualities. Shock absorbers are fitted on all Models; finger adjustment on larger Models. Steering dampers on all except lightweight.
- GEARBOX** - - - Four-speed gear on all except Two-strokes. The gear box is pivotally mounted between the rear engine plates.
- TRANSMISSION** Roller chains throughout; patent cush drive in rear hub, absorbing all engine shocks. Primary drive on Models C, G, J, JF, L and K enclosed in oil-bath case.
- TANK** - - - Welded steel construction, mounted on rubber, eliminating all risk of leakage.
- MUDGUARDS** - Efficient wide mudguards. Rear mudguard quickly detachable for access to rear wheel.
- CARRIER** - - - The carrier is of pressed steel, fixed to the rear mudguard, and is easily detachable.
- HUBS** - - - Royal Enfield, fitted with non-adjustable deep-groove journal bearings. Certain models have a special design of rear hub which enables an inner tube to be changed without removing the wheel.
- BRAKES** - - - Internal expanding, of Royal Enfield manufacture. Special linings giving smooth, powerful action, long life and freedom from scoring. Finger adjustment to both brakes on all models.
- EQUIPMENT** - Complete set of tools, grease gun and inflator.
- ELECTRIC EQUIPMENT** - An electric lighting set is standard equipment on all models. A control panel containing the switch and ammeter is mounted in the tank top. The bulb in the rear lamp is mounted on a rubber diaphragm. All models have large capacity (12 amp. hour) battery, which on Models C, G, J, JF and L is mounted on rubber.

MODEL T
148 c.c. O.H.V.



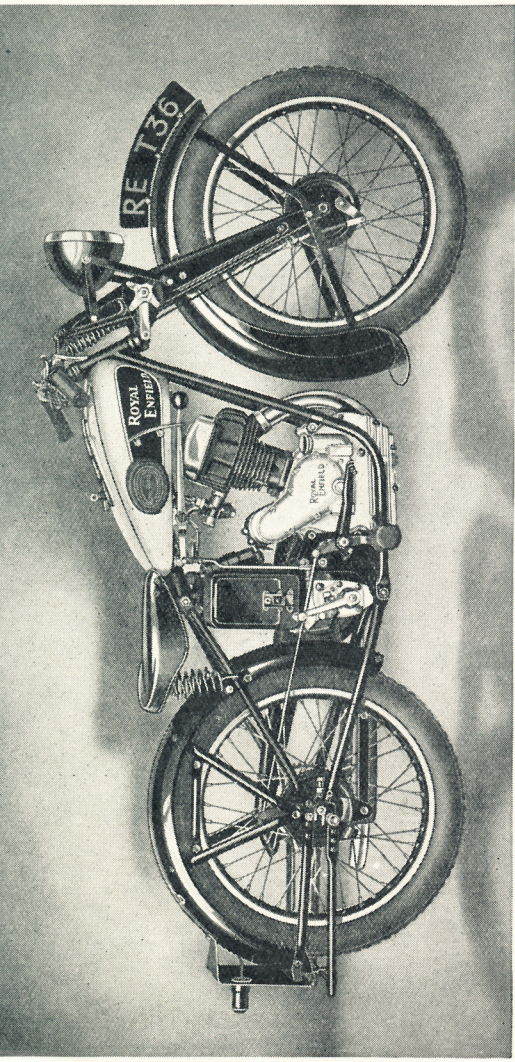
ROYAL ENFIELD

CASH PRICE

30 Guineas

including Electric Lighting Set
or by Gradual Payments

LEG SHIELDS, 15/- extra

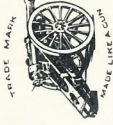


A real sports model with a remarkable performance and the lowest possible running costs.

- ENGINE** - 148 c.c. single cylinder. Bore and stroke 56 x 60 m.m. Overhead valves, rocker gear and push rods totally enclosed and automatically lubricated.
- SILENCER** - New and most efficient Enfield absorption silencer.
- LUBRICATION** - Royal Enfield dry-sump lubrication, oil container in crankcase.
- CARBURETTOR** - Twist grip control; down draught type.
- FRONT FORK** - Pressed steel blades, central compression spring. Two large shock absorbers. Perfect steering and road holding.
- GEARBOX** - Four-speed with hand control. Gear ratios: 7.5, 10.1, 13.5 and 22 to 1. Positive change foot control at an extra charge of £1.
- IGNITION AND LIGHTING SET** - Lucas 6-volt dynamo lighting and ignition set with large capacity battery. Dynamo gear-driven from engine. Control panel in tank.
- BRAKES** - Internal expanding, 5in., front and rear.
- TYRES** - Dunlop cord, 25 x 3in.
- FINISH** - Best quality black enamel. Bright parts chromium plated. Tank finished aluminium with green panels.

ANNUAL TAX - 12/-

MODEL A
225 c.c. Two-stroke



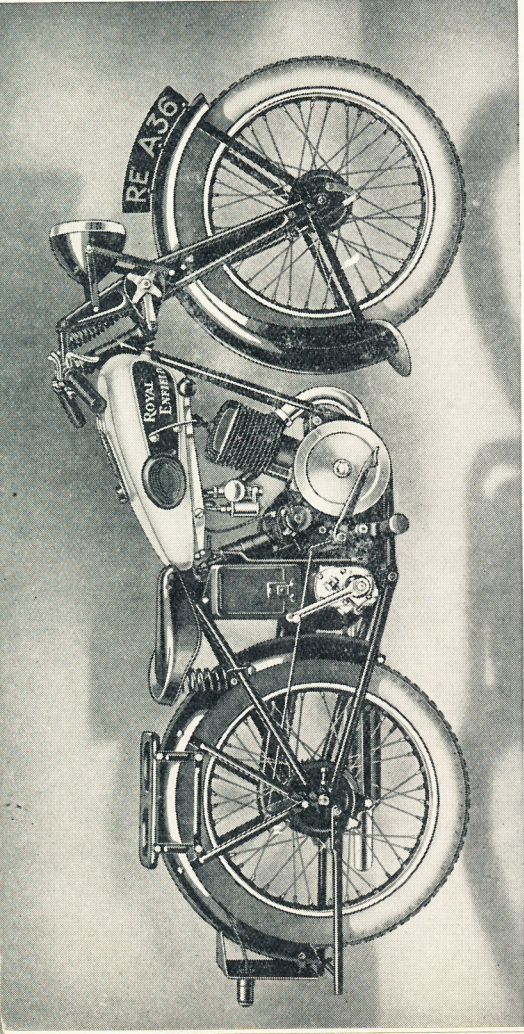
ROYAL
ENFIELD

CASH PRICE

25 Guineas

including Electric Lighting Set
or by Gradual Payments

LEG SHIELDS, 15/- extra.

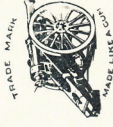


A fully equipped machine which meets all the requirements of utility riders.

- ENGINE** - 225 c.c. single cylinder two-stroke. Bore and stroke 64 x 70 m.m. Roller bearing big end.
- LUBRICATION** - Oil mixed with petrol.
- CARBURETTOR** - Special single lever type with air cleaner.
- GEARBOX** - Three-speed with hand control. Standard ratios: 5.3, 7.8 and 15.6 to 1. Handlebar-control clutch and kick starter.
- FRONT FORK** - Pressed steel blades, central compression spring. Two large shock absorbers.
- IGNITION AND LIGHTING SET** - Lucas 6-volt dynamo electric lighting and ignition set, 7in. headlamp, rear light.
- TYRES** - Dunlop cord, 25 x 3in.
- BRAKES** - Internal expanding: 5in. front and rear.
- STAND** - Rear spring-up stand.
- FINISH** - Best quality black enamel. Bright parts chromium plated. Tank finished aluminium with green panels.

ANNUAL TAX - 22/6

MODEL B
248 c.c. Side-valve.



ROYAL ENFIELD

A general utility model which will appeal to those who prefer a side-valve machine.

- ENGINE** - 248 c.c. single cylinder. Bore and stroke 64 x 77 m.m. Side valves, totally enclosed. Detachable cylinder head.
- SILENCER** - New and most efficient Enfield absorption silencer.
- LUBRICATION** - Royal Enfield dry-sump lubrication, oil container in crankcase.
- CARBURETTOR** - Twist grip control to throttle, handle-bar lever control to air slide.
- GEARBOX** - Four-speed with hand control. Standard ratios: 6.6, 8.9, 11.8 and 19.2 to 1.
- FRONT FORK** - Pressed steel blades, central compression spring. Two large shock absorbers.
- IGNITION AND LIGHTING SET** - Lucas 6-volt dynamo lighting and ignition set, with large capacity battery. Dynamo gear-driven from engine. Control panel in tank.
- BRAKES** - Internal expanding, 5in. front and rear.
- TYRES** - Dunlop cord, 25 x 3in.
- FINISH** - Best quality black enamel. Bright parts chromium plated. Tank finished aluminium with green panels.

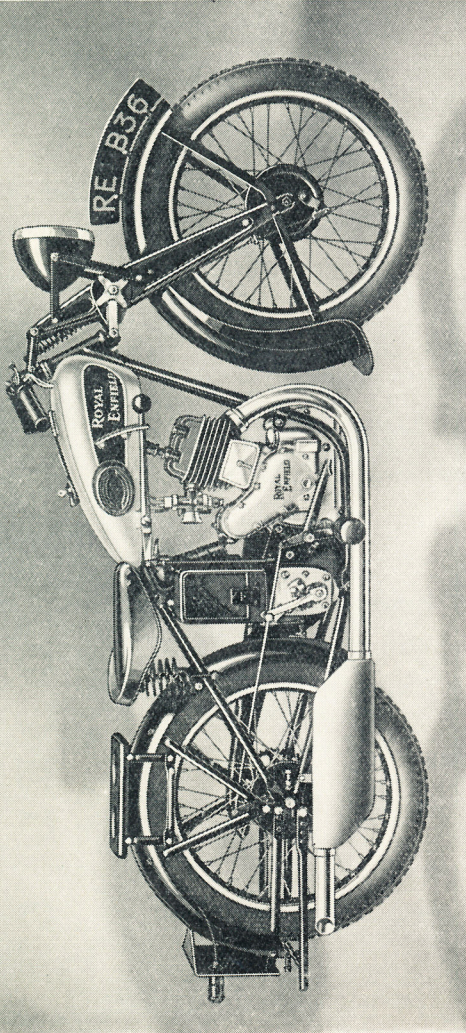
ANNUAL TAX - 22/6

CASH PRICE

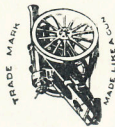
30 Guineas

including Electric Lighting Set
 or by Gradual Payments

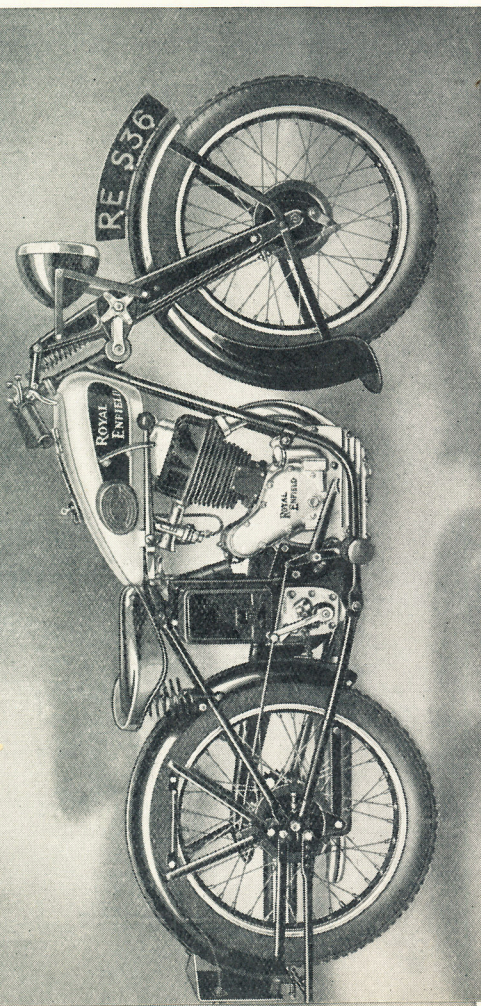
Lucas Magdyno Lighting and
 Ignition Set - - £3/15/0 extra
 Leg Shields - - - 15/- ”



MODEL S
248 c.c. O.H.V.



ROYAL ENFIELD



Probably the fastest machine of its type—certainly the most silent mechanically.

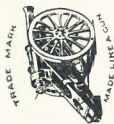
- ENGINE-** 248 c.c. single cylinder. Bore and stroke 64 x 77 m.m. Overhead valves, rocker gear and push rods totally enclosed and automatically lubricated. Detachable cover for easy adjustment of tappets.
- SILENCER** New and most efficient Enfield absorption silencer.
- LUBRICATION -** Royal Enfield dry-sump lubrication, oil container in crankcase.
- CARBURETTOR-** Down-draught type. Twist grip control to throttle.
- FRONT FORK -** Pressed steel blades, central compression spring. Two large shock absorbers. Perfect steering and road-holding.
- GEARBOX -** Four-speed with hand control. Ratios: 6.2, 8.4, 11.1 and 18 to 1. Positive change foot control at an extra charge of £1.
- IGNITION AND LIGHTING SET-** Lucas 6-volt dynamo lighting and ignition set, with extra large battery. Dynamo gear-driven from engine. Control panel in tank.
- BRAKES -** Internal expanding, 5in. front and rear.
- TYRES -** Dunlop cord, 25 x 3in.
- FINISH -** Best quality black enamel. Bright parts chromium plated. Tank finished aluminium with green panels.

ANNUAL TAX - 22/6

CASH PRICE
34 Guineas
 including Electric Lighting Set
 or by Gradual Payments

Lucas Magdyno Lighting and Ignition Set - - £13/15/0 extra
 Leg Shields - - 15/- "

MODEL S2 "250 BULLET"



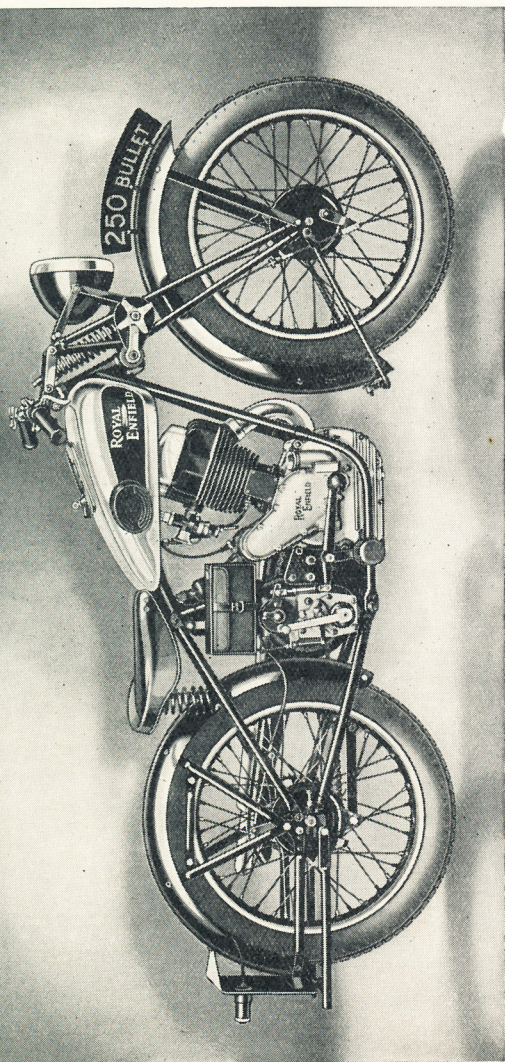
ROYAL ENFIELD

CASH PRICE

37 Guineas

including Electric Lighting Set
or by Gradual Payments

Lucas Magdyno Lighting and
Ignition Set - - £3/15/0 extra

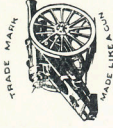


A tuned sports model with the acceleration and speed of many larger machines.

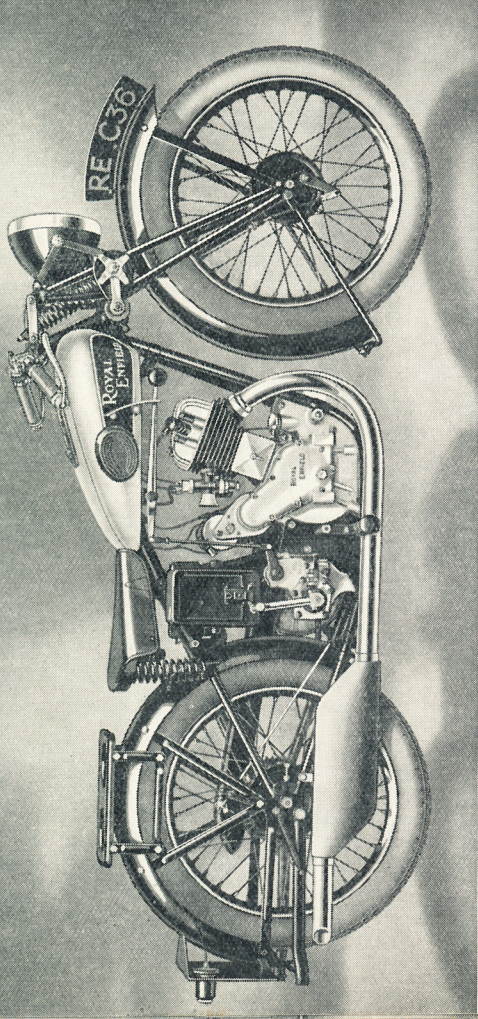
- ENGINE** - - 248 c.c. single cylinder. Bore and stroke 64 x 77 m.m. Overhead valves, rocker gear and push rods totally enclosed and automatically lubricated. Detachable cover for easy adjustment of tappets. High compression tuned engine, upswept exhaust pipe, and new absorption silencer.
- LUBRICATION** - Royal Enfield dry-sump lubrication. Oil container in crankcase.
- CARBURETTOR** - Down-draught type. Twist grip control to throttle.
- FRONT FORK** - Tubular type, central compression spring. Two large shock absorbers. Perfect steering and road-holding.
- GEARBOX** - - Four-speed with positive change foot control. Ratios: 6.2, 8.4, 11.1 and 18 to 1.
- IGNITION AND LIGHTING SET** - Lucas 6-volt dynamo lighting and ignition set, with extra large battery. Dynamo gear-driven from engine. Control panel in tank.
- BRAKES** - - Internal expanding, 5in. front and rear.
- TYRES** - - Dunlop cord, 25 x 3in.
- FINISH** - - Best quality black enamel. Bright parts, including tank and handlebar, chromium plated.

ANNUAL TAX - 22/6

MODEL C
346 c.c. Side-valve



ROYAL ENFIELD



A side-valve machine on which fast averages can be maintained with ease.

- ENGINE-** 346 c.c. single cylinder. Bore and stroke 70 x 90 mm. Side-valves, totally enclosed. Detachable aluminium cylinder head.
- SILENCER** - New and most efficient Enfield absorption silencer.
- LUBRICATION** - Enfield dry-sump lubrication, oil container in crankcase.
- CARBURETTOR-** Twist grip control to throttle, handle-bar lever control to air slide.
- GEARBOX** - Four-speed with hand control. Standard ratios: 6.2, 8.4, 11.1 and 18.1 to 1.
- IGNITION AND LIGHTING SET-** Lucas 6-volt Magdno electric lighting and ignition set, gear-driven from engine. Control panel in tank.
- BRAKES** - Internal expanding, front 5in., rear 6½in.
- TRANSMISSION** Front chain totally enclosed in cast aluminium oil-bath case.
- TYRES** - Dunlop cord, 25 x 3in.
- STANDS-** Front and rear, latter of spring-up type.
- FINISH** - Best quality black enamel. Bright parts chromium plated. Tank finished aluminium with green panels.

CASH PRICE

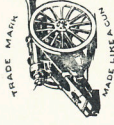
42 Guineas

including Electric Lighting Set
or by Gradual Payments

LEG SHIELDS, 15/- extra.

ANNUAL TAX - 45/-

MODEL G
346 c.c. O.H.V.



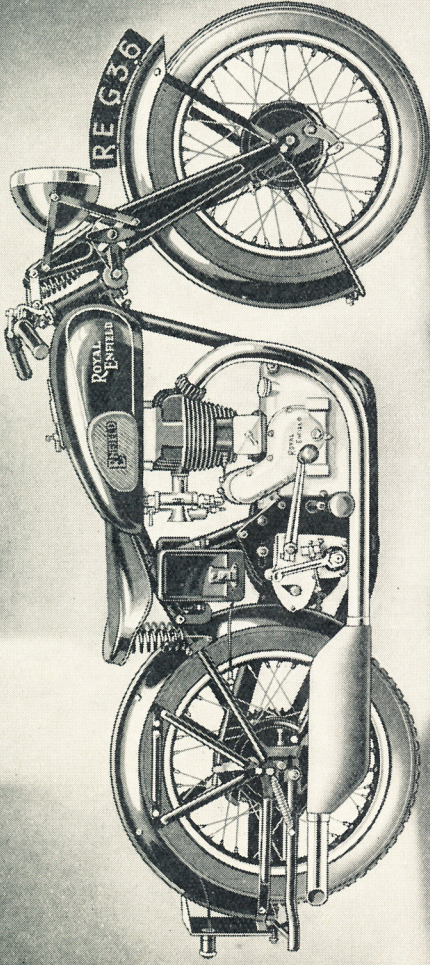
ROYAL ENFIELD

CASH PRICE

43 Guineas

including Electric Lighting Set
or by Gradual Payments

Lucas Magdyno Lighting and
Ignition Set - - £3/15/0 extra



A medium weight machine with more than enough speed for most riders. Will take a light sidecar if desired

ENGINE-

346 c.c. O.H.V. single cylinder. Bore and stroke 70 x 90 m.m. Overhead valves, push rods and rocker gear totally enclosed and automatically lubricated.

SILENCER -

New and most efficient Enfield absorption silencer.

LUBRICATION -

Royal Enfield dry-sump lubrication, oil container in crankcase.

CARBURETTOR-

Twist grip control to throttle, handlebar lever control to air slide.

GEARBOX -

Heavyweight four-speed with positive change foot control. Standard ratios: Solo, 5.5, 7.2, 9.2, and 15.3 to 1. Sidecar, 6.5, 8.5, 11.7 and 18 to 1.

FRONT FORK -

Pressed steel blades, central compression spring, hand controlled shock absorbers and steering damper.

IGNITION AND LIGHTING SET.

Lucas 6-volt dynamo lighting and ignition set, with extra large battery mounted on rubber. Dynamo gear-driven from engine. Control panel in tank.

BRAKES -

Internal expanding, front and rear 6 1/2 in. diameter.

TRANSMISSION

Front chain totally enclosed in oil-bath case.

REAR WHEEL

With knock-out spindle enabling an inner tube to be changed with the wheel in position.

TYRES -

Dunlop cord, 26 x 3 in. front, 26 x 3.25 in. rear.

STANDS-

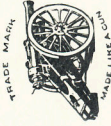
Front and rear, latter of spring-up type.

FINISH -

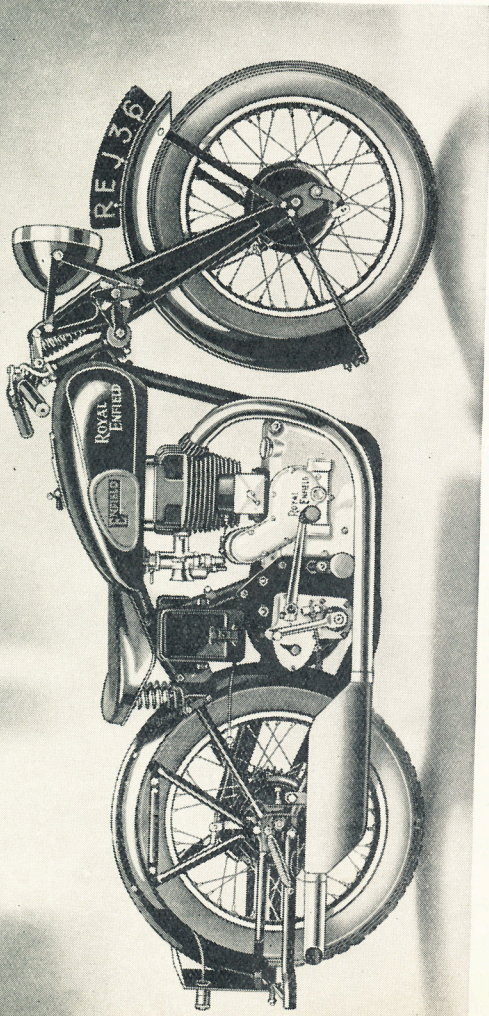
Best quality black enamel. Tank finished in black enamel with gold lining. Bright parts chromium plated.

ANNUAL TAX - 45/-

MODEL J
499 c.c. O.H.V.



ROYAL ENFIELD



A fast touring machine with ample power for all occasions.

<p>ENGINE - - - 499 c.c. single cylinder. Bore and stroke 84 x 90 m.m. Overhead valves, rocker gear and push rods totally enclosed and automatically lubricated.</p> <p>SILENCER - - - New and most efficient Enfield absorption silencer.</p> <p>LUBRICATION - - - Royal Enfield dry-sump circulating system, oil container in crankcase.</p> <p>CARBURETTOR - - - Twist grip control to throttle, handlebar lever control to air slide.</p> <p>GEARBOX - - - Heavyweight four-speed with positive change foot control. Standard ratios: Solo, 5, 6.5, 9 and 13.9 to 1. Sidecar, 5.8, 7.6, 10.4 and 16.1 to 1.</p> <p>FRONT FORK - - - Pressed steel blades, central compression spring, hand controlled shock absorbers and steering damper.</p>	<p>IGNITION AND LIGHTING SET - - - Lucas 6-volt dynamo lighting and ignition set, with extra large battery mounted on rubber. Dynamo gear-driven from engine. Control panel in tank.</p> <p>BRAKES - - - Internal expanding, front and rear 6 3/4 in. diameter.</p> <p>TRANSMISSION - - - Front chain totally enclosed in oil-bath case.</p> <p>REAR WHEEL - - - With knock-out spindle enabling an inner tube to be changed without removing the wheel.</p> <p>TYRES - - - Dunlop cord, 26 x 3.25 in.</p> <p>STANDS - - - Front and rear, latter of spring-up type.</p> <p>FINISH - - - Best quality black enamel. Tank finished in black enamel with gold lining. Bright parts chromium plated.</p>
--	--

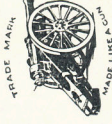
CASH PRICE

47 Guineas

including Electric Lighting Set
 or by Gradual Payments
 Lucas Magdano Lighting and
 Ignition Set - - £3/15/0 extra

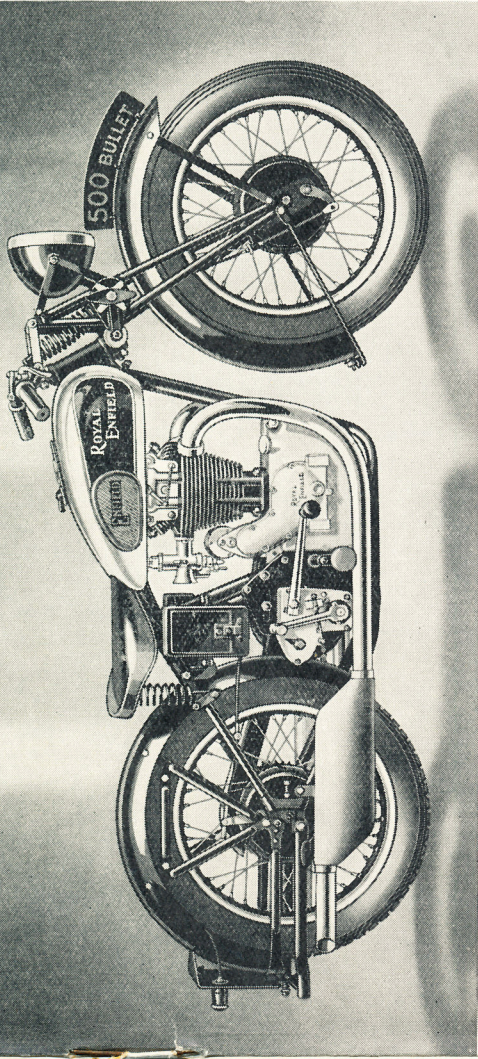
ANNUAL TAX - 45/-

MODEL JF
"500 BULLET"
499 c.c. Four valve



ROYAL
ENFIELD

CASH PRICE
57 Guineas
 including Electric Lighting Set
 or by Gradual Payments

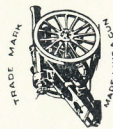


Terrific speed and acceleration with amazing road-holding qualities.

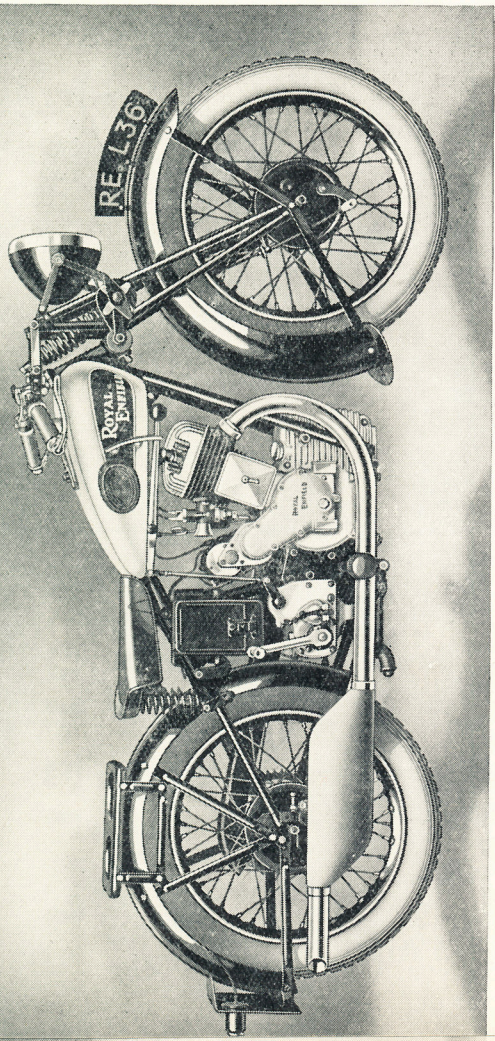
- ENGINE.** 499 c.c. single cylinder. Bore and stroke 84 x 90 m.m. Tuned engine with high compression piston. Four overhead valves operated by push rods and roller bearing rockers. Separate tappet adjustment for each valve.
- SILENCERS** - New and most efficient absorption silencers. Upswept exhaust pipes and silencers can be fitted if desired without extra charge.
- LUBRICATION** - Royal Enfield dry-sump circulation system, oil contained in crankcase.
- CARBURETTOR.** Twist grip control to throttle, handlebar lever control to air slide.
- GEARBOX** - Heavyweight four - speed with positive change foot control. Standard ratios: Solo, 5, 6.5, 9 and 13.9 to 1. Sidecar, 5.8, 7.6, 10.4 and 16.1 to 1.
- FRONT FORK** - Tubular type with hand controlled shock absorbers and steering damper.
- IGNITION AND LIGHTING SET.** Lucas 6-volt Magdno electric lighting and ignition set, gear - driven from engine. Large rubber mounted battery. Control panel in tank.
- BRAKES** - Internal expanding, front and rear 6 1/2 in. diameter. Rear brake with ribbed malleable iron drum.
- TRANSMISSION** - Front chain totally enclosed in oil-bath case.
- REAR WHEEL** - With knock-out spindle enabling inner tube to be changed without removing the wheel.
- TYRES** - Dunlop cord, 26 x 3.25 in. front, 26 x 3.5 in. rear.
- STANDS-FINISH** - Front and rear, latter of spring-up type. Best quality black enamel. Tank chromium plated with maroon panels. Bright parts chromium plated.

ANNUAL TAX - 45/-

MODEL L
570 c.c. Side-valve



ROYAL ENFIELD



The "big single" in its most modern form. Suitable for solo or sidecar work.

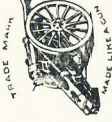
- | | |
|--|---|
| <p>ENGINE - - - 570 c.c. single cylinder side valve. Bore and stroke 85 x 99.25 mm. Specially designed aluminium detachable cylinder head. Valves totally enclosed.</p> <p>SILENCER - - - New and most efficient absorption silencer.</p> <p>LUBRICATION - Royal Enfield dry-sump circulating system, oil container in crankcase.</p> <p>CARBURETTOR - Twist grip control to throttle, handlebar lever control to air slide.</p> <p>GEARBOX - - - Heavyweight four - speed with hand control. Standard ratios : Solo, 5, 6.5, 9 and 13.9 to 1. Sidecar, 5.8, 7.6, 10.4 and 16.1 to 1.</p> | <p>IGNITION AND LIGHTING SET - Lucas 6-volt Magdyno electric lighting and ignition set, gear-driven from engine. Control panel in tank.</p> <p>BRAKES - - - Internal expanding, front and rear 6 3/8 in. diameter.</p> <p>TRANSMISSION - Front chain totally enclosed in cast aluminium oil-bath case.</p> <p>REAR WHEEL - With knock-out spindle enabling an inner tube to be changed without removing the wheel.</p> <p>TYRES - - - Dunlop cord, 26 x 3.25 in.</p> <p>STAND - - - Patented central prop stand.</p> <p>FINISH - - - Best quality black enamel. Bright parts chromium plated. Tank finished in aluminium, with green panels.</p> |
|--|---|

CASH PRICE
50 Guineas
including Electric Lighting Set
or by Gradual Payments

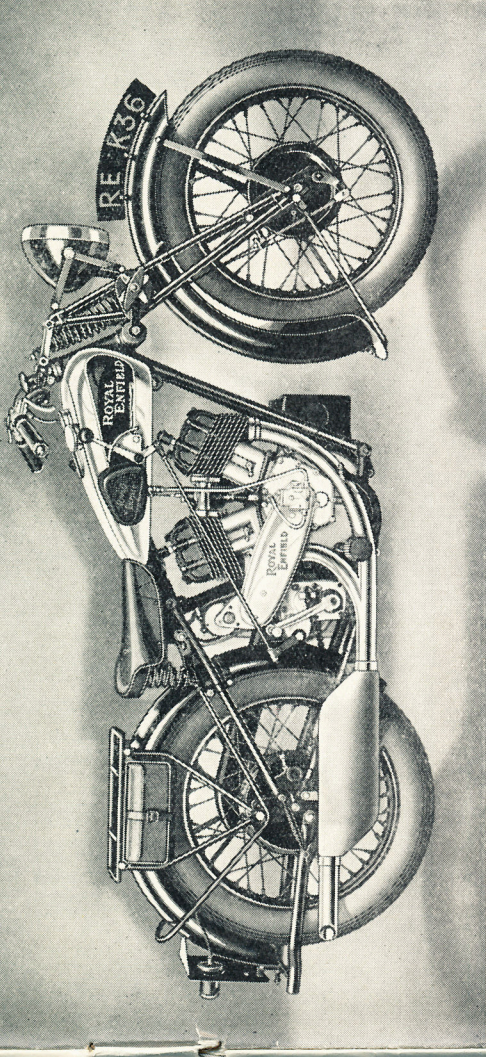
LEG SHIELDS, 15/- extra

ANNUAL TAX - 45/-

MODEL K
976 c.c. Side-valve Twin



ROYAL
ENFIELD



A famous model in its latest form. Generally used with a sidecar, but also a delightful solo mount.

- ENGINE** - 976 c.c. side-valve twin cylinder. Bore and stroke 85.5 x 85 m.m. Detachable cylinder heads, enclosed tappets and valves.
- SILENCER** - New and most efficient Enfield absorption silencer.
- LUBRICATION** - Mechanical pump with adjustable sight feed.
- CARBURETTOR** - Twist grip control to throttle, handle-bar control to air slide.
- GEARBOX** - Heavyweight four-speed with hand control. Standard ratios: 4.5, 5.8, 8.1 and 12.5 to 1. Solo ratios (to special order): 4, 5.2, 7.2 and 11.1 to 1.
- IGNITION AND LIGHTING SET** - Lucas 6-volt Magdyno electric lighting and ignition set. Control panel in tank.
- BRAKES** - Internal expanding, front 7in. diameter, rear 8in.
- TRANSMISSION** - Front chain totally enclosed in cast aluminium oilbath case.
- TYRES** - Dunlop cord, 26 x 3.5in.
- STANDS** - Front and rear, latter spring-up type
- FINISH** - Best quality black enamel, bright parts chromium plated. Tank chromium plated, with green panels.

CASH PRICE

62 Guineas

including Electric Lighting Set
 or by Gradual Payments

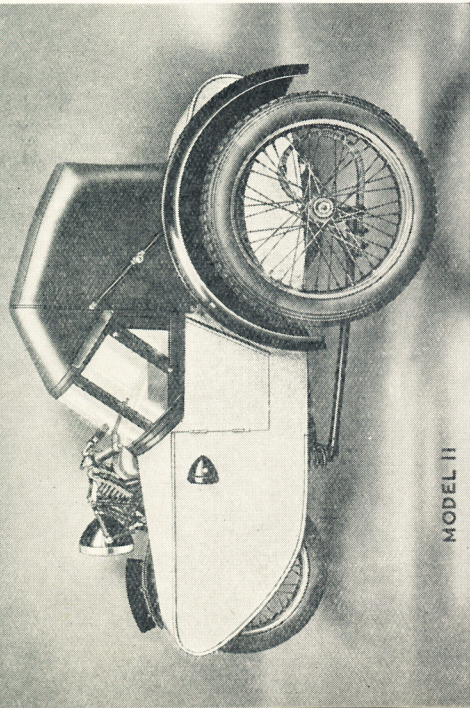
LEG SHIELDS, 15/- extra

ANNUAL TAX - 45/-

ROYAL ENFIELD

SIDECARS

Fit a sidecar for safety and economy! Official statistics show that the sidecar combination is the most stable vehicle on the road. Where a sidecar is permanently attached to a motor cycle the insurance premium shows a reduction from that for a solo machine of 40 per cent. Especially in the case of the higher powered machines, therefore, a considerable saving is effected. The extra tax for a sidecar is now reduced to 15/-.



MODEL 11

MODEL 11. LIGHTWEIGHT SPORTS.—This body is of sporting lines, upholstered in best quality leather cloth and panelled in aluminium fabric. A locker is provided behind the seat. The celluloid windscreen and collapsible hood are provided as part of the equipment.

CASH PRICES.

On No. 1	Chassis for Model C	£15	15s.
On No. 2	Chassis for Models G, J and JF	£15	15s.
On No. 2a	Chassis for Model L	£15	15s.
On No. 3	Chassis for Model K	£17	10s.

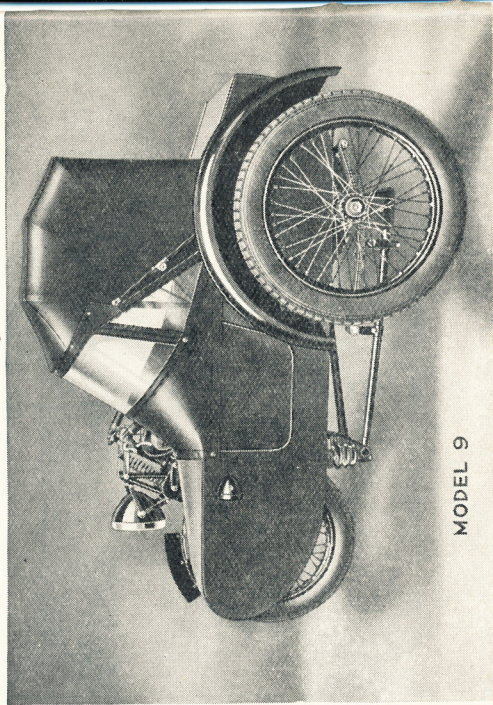
or by Gradual Payments.

MODEL 9. MEDIUMWEIGHT TOURING.—A touring sidecar at an attractive price. The body, covered with green fabric, is of plywood on a very strong framework. Upholstery is best leather cloth, and windscreen and hood are included in the specification.

CASH PRICES.

On No. 1	Chassis for Model C	£15	15s.
On No. 2	Chassis for Models G, J and JF	£15	15s.
On No. 2a	Chassis for Model L	£15	15s.
On No. 3	Chassis for Model K	£17	10s.

or by Gradual Payments.



MODEL 9

ROYAL ENFIELD

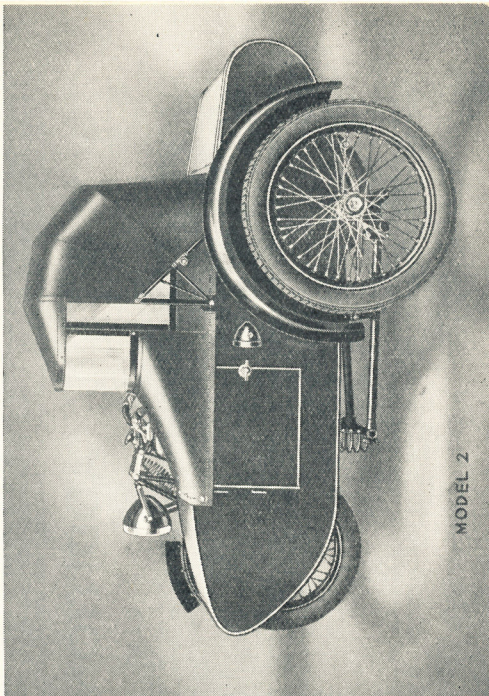
SIDECARS

MODEL 8. SPORTS.—This model is attractively designed and comfortably upholstered. The panels are of figured aluminium fabric, and windscreen and hood are standard equipment. Behind the seat is a long, useful locker. The low position offers minimum wind resistance, yet is quite comfortable and has ample accommodation for a tall, weighty passenger.

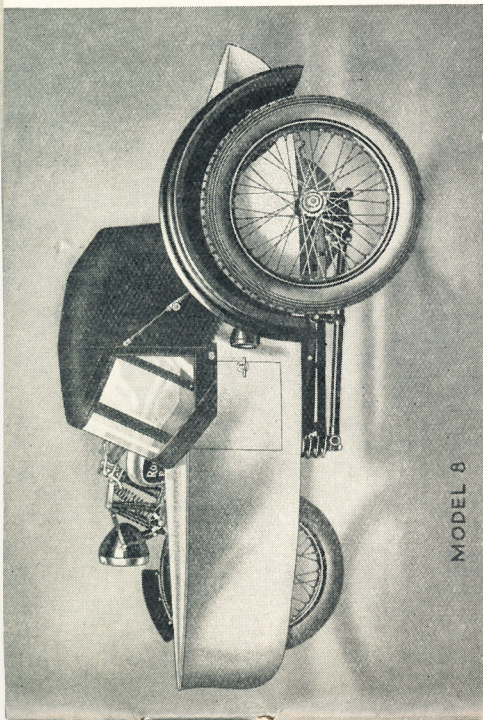
CASH PRICES.

On No. 2	Chassis for Models G, J and JF	£19	10s.
On No. 2a	Chassis for Model L	£19	10s.
On No. 3	Chassis for Model K	£21	0s.

or by Gradual Payments.



MODEL 2



MODEL 8

MODEL 2. TOURING.—This handsome coachbuilt body is very strong and well-made. Selected timber is used for the foundation, and the panels are of sheet metal. The luggage compartment at the rear is very capacious, yet does not detract from the appearance of the body. Dark green cellulose gives a beautiful finish. Windscreen and hood are standard fittings.

CASH PRICE.

On No. 3	Chassis for Model K	£22
----------	---------------------	-----	-----	-----	-----

or by Gradual Payments.

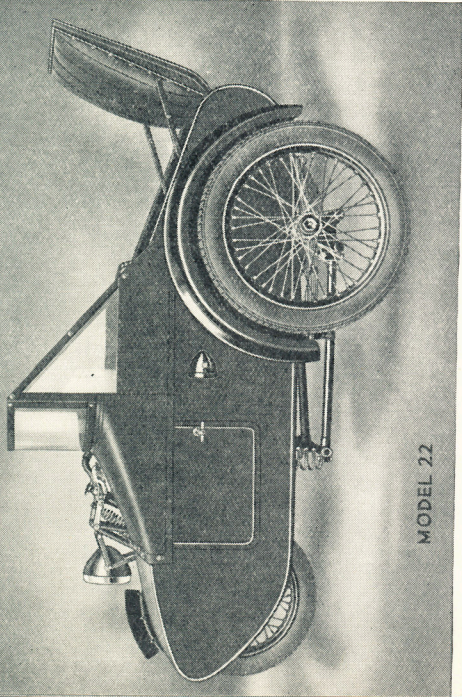
ROYAL ENFIELD

TWO-SEATER SIDECAR

MODEL 22. TWO-SEATER.—This sidecar will accommodate two adults if necessary. Alternatively the rear seat may be utilised for carrying luggage. When the rear seat is not in use it can be folded up, giving the appearance of a very attractive single-seater body. The general specification is similar to that of the Touring Sidecar, Model 2, and includes one windscreen. An additional one can be supplied at an extra charge, of £1 10s.

CASH PRICE.

On No. 3 Chassis for Model K £25
 or by Gradual Payments.



MODEL 22

ADDITIONAL EQUIPMENT

Extra for :—		Cash Price	Extra for :—		Cash Price
Lucas Magdyno Lighting Set on Models T, S, "250 Bullet,"	...	£3 15 0	Carrier on O.H.V. Models	10 0
G and J	2 10 0	27 x 4in. Tyres on Model K (per pair)	10 6
Smith's Trip Speedometer	10 6	26 x 3.5in. Tyres, in place of 26 x 3.25in. (per pair)	...	12 6
Electric Horn...	...	10 0	Fort Dunlop Tyres (per pair)	10 0
Electric Lamp for Sidecar	15 0	Pillion Seat—Mudguard fitting	15 0
Legshields	10 0	Pillion footrests, Models T, A, B and S	10 0
Footboards on Model K	10 0	Pillion footrests, on other Models...	...	6 0

ROYAL ENFIELD CONDITIONS OF SALE AND GUARANTEE

The following is a copy of the Guarantee given by dealers in Royal Enfield Motor Cycles:—

We give the following guarantee with our motor cycles, motor cycle combinations and sidecars, which is given in place of any implied conditions, warranties or liabilities whatsoever, statutory or otherwise, all such implied conditions, warranties and liabilities being in all cases excluded. Any statement, description, condition or representation contained in any catalogue, advertisement, leaflet or other publication shall not be construed as enlarging, varying or over-riding this guarantee. In the case of machines (a) which have been used for "hiring out" purposes; or (b) any motor cycle and/or sidecar used for any dirt track, cinder track, or grass track racing or competitions (or any competition of any kind within an enclosure for which a charge is made for admission to take part in or view the competition); or (c) machines from which the trade mark, name, or manufacturing number has been removed, no guarantee of any kind is given or is to be implied.

We guarantee, subject to the conditions mentioned below, that all precautions which are usual and reasonable have been taken by us to secure excellence of materials and workmanship, but this guarantee is to extend and be in force for six months only from the date of purchase, and damages for which we make ourselves responsible under this guarantee are limited to the free supply of a new part in exchange for the part of the motor cycle, motor cycle combination or sidecar which may have proved defective. We do not undertake to replace or refix, or bear the cost of replacing or refixing, such new part in the motor cycle, motor cycle combination or sidecar. We undertake, subject to the conditions mentioned below, to make good at any time within six months any defects in these respects. As motor cycles, motor cycle combinations and sidecars are easily liable to derangement by neglect or misuse this guarantee does not apply to defects caused by wear and tear, misuse or neglect.

The term "misuse" shall include amongst others the following acts:—

1. The attaching of a sidecar to the motor cycle in such a manner as to cause damage or calculated to render the latter unsafe when ridden.
2. The use of a motor cycle or of a motor cycle and sidecar combined, when carrying more persons or a greater weight than that for which the machine was designed by the manufacturers.
3. The attaching of a sidecar to a motor cycle by any form of attachment not provided, supplied or approved by the manufacturers or to a motor cycle which is not designed for such use.

Any motor cycle or motor cycle combination or sidecar sent to us to be plated, enamelled or repaired will be repaired upon the following conditions, i.e., we guarantee that all precautions which are usual and reasonable have been taken by us to secure excellence of materials and workmanship, such guarantee to extend and be in force for three months only from the time such work shall have been executed, or until the expiration of the six months above referred to, and this guarantee is in lieu and in exclusion of any common law, or statute warranty or condition, and the damages recoverable are limited to the cost of any further work which may be necessary to amend and make good the work found to be defective.

CONDITIONS OF GUARANTEE

If a defective part should be found in our motor cycles, motor cycle combinations or sidecars, or in any part supplied by way of exchange before referred to, it must be sent to us CARRIAGE PAID, and accompanied by an intimation from the owner that he desires to have it repaired or exchanged free of charge under our guarantee, and he must also furnish us at the same time with the number of the machine, the date of the purchase, or the date when the alleged defective part was exchanged as the case may be. Failing compliance with the above, such articles will lie here AT THE RISK OF THE OWNER, and this guarantee and any implied guarantee, warranty or condition shall not be enforceable.

We do not guarantee specialities such as tyres, saddles, chains, lamps, etc., or any component parts supplied to the order of the purchaser differing from standard specifications supplied with our motor cycles, motor cycle combinations, sidecars or otherwise.

CONDITIONS OF SALE

The prices appearing in this catalogue are STRICTLY NET. All goods are sold subject only to the conditions of guarantee given above. The Royal Enfield Motor Cycle and Sidecar Combinations are sold subject to the further condition that we cannot accept responsibility if used with any sidecars other than the ones supplied by us. Models Z, T, A, B, S and S2 are sold subject to the further condition that we cannot accept responsibility if they are used with sidecars of whatsoever make or type. The prices and specifications in this list are subject to alteration at any time without previous notice.

1. All machines are sent Carriage Paid to the nearest railway station.
2. Notwithstanding payment of carriage, all goods are to be considered as delivered to the customer when put on rail at Redditch Station, and all orders are accepted and executed upon this understanding.
3. Upon receipt of goods by customer, it is essential that the Railway Company's Delivery Sheet should in all cases be signed "not examined." The goods should then be carefully inspected, and in the event of any damage, notice should at once be sent to the Carriers and claim made from them.
4. We reserve the right to despatch either by Goods or Passenger Train, but when machines are sent by Goods Train in Crates, the Crates are charged, and half the amount charged is allowed when returned in good condition.
5. Cases and Crates for shipment abroad are charged at Cost Price.

NOTICE

We do not appoint agents for the sale on our behalf of our motor cycles or other goods, but we assign to motor cycle dealers areas in which we supply to such dealers exclusively for re-sale in such areas. No such dealer is authorised to transact any business, give any warranty, make any representation or incur any liability on our behalf.

**THE ENFIELD CYCLE CO. LTD.
HEAD OFFICE AND WORKS - REDDITCH**

Telephone: REDDITCH 121 (5 lines) Telegrams: "CYCLES, PHONE, REDDITCH"

ALSO MANUFACTURERS OF

ROYAL ENFIELD

HIGH GRADE BICYCLES

Catalogue post free on request.

London Office and Showrooms: **48, HOLBORN VIADUCT, E.C.1**
Telephones: 5822 and 5823 HOLBORN Telegrams: "JIGGER, CENT, LONDON"

London Service Depot 49, FARRINGDON STREET, E.C.4
Telephone: 2508 HOLBORN